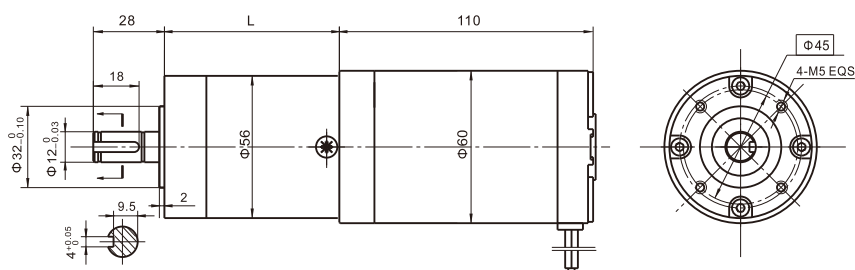


永磁直行星齿轮电机 (内齿圈材质: 金属)

PM DC Planetary Gear Motor (Ring Gear Material: Metal)

56JX300K/60ZY105 $\Phi 56$ 加强型减速器, 允许转矩范围: 2N.m~30N.m
 56mm OD Reinforced Gearbox, Permissible Load Range: 2N.m~30N.m

● 外形和安装尺寸 Dimensions



● 电动机主要技术参数 Motor Technical Data

电机型号 TYPE	额定电压 Rated voltage VDC	空载转速 No-load speed r/min	空载电流 No-load current A	额定转速 Rated speed r/min	额定转矩 Rated torque mN.m	输出功率 Output power W	额定电流 Rated current A	堵转力矩 Stall torque mN.m	堵转电流 Stall current A
60ZY105-2420	24	2000	0.25	1600	165	30	1.8	760	7.3
60ZY105-2430	24	3000	0.35	2400	180	45	2.2	790	11.2
60ZY105-2450	24	5000	0.50	4000	230	90	6.0	920	15.5

● 齿轮减速电机主要技术参数 Gear Motor Technical Data

配置60ZY105-2430直流电机 (60ZY105-2430 DC Motor)

减速比 Reduction ratio	3.6	4.25	7.5	13	15	18	27	32	47	55	65	76	115	168	198	234
减速级数 Number of gear trains	1	1	1	2	2	2	2	2	3	3	3	3	3	4	4	4
减速器长度(L) Length(L) mm	41	41	41	53	53	53	53	53	64	64	64	64	64	84	84	84
空载转速 No-load speed r/min	833	706	400	230	200	167	111	94	64	54	46	39	26	18	15	13
额定转速 Rated speed r/min	694	588	320	192	167	139	88	75	53	45	38	33	20	15	12	10
额定转矩 Rated torque N.m	0.58	0.68	1.2	1.8	2.1	2.6	3.9	4.6	6.1	7.2	8.5	10	15	20	23.5	28
最大瞬间允许负载 Max. permissible load in a short time N.m	6	6	6	25	25	25	25	25	50	50	50	50	50	90	90	90

配置60ZY105-2450直流电机 (60ZY105-2450 DC Motor)

减速比 Reduction ratio	3.6	4.25	7.5	13	15	18	27	32	47	55	65	76	115	168	198
减速级数 Number of gear trains	1	1	1	2	2	2	2	2	3	3	3	3	4	4	4
减速器长度(L) Length(L) mm	41	41	41	53	53	53	53	53	64	64	64	64	84	84	84
空载转速 No-load speed r/min	1389	1176	666	385	333	278	185	156	106	91	77	66	30	25	25
额定转速 Rated speed r/min	1111	941	533	307	266	222	148	125	85	72	61	52	24	20	20
额定转矩 Rated torque N.m	0.74	0.87	1.5	2.4	2.7	3.3	5.0	5.9	7.8	9.2	10.9	12.7	25.5	30	30
最大瞬间允许负载 Max. permissible load in a short time N.m	6	6	25	25	25	25	25	25	50	50	50	50	60	60	60

● 电动机特性图 Motor Characteristic Figure

