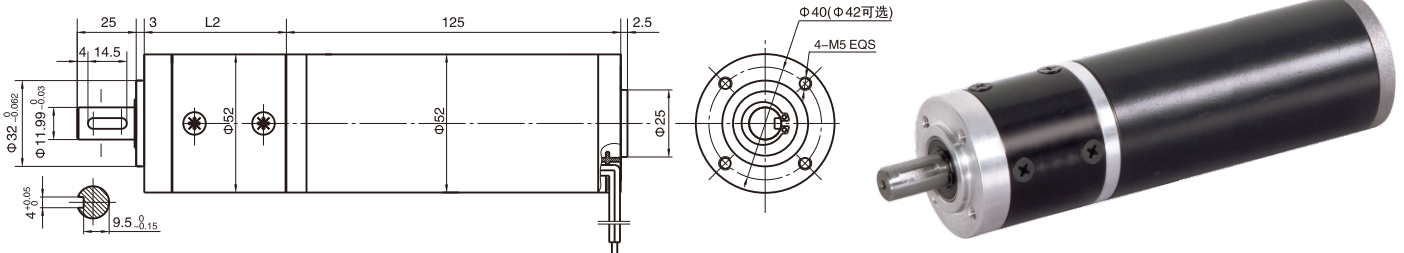


永磁直流行星齿轮电机 (内齿圈材质: 金属)

PM DC Planetary Gear Motor (Ring Gear Material: Metal)

**52JXM200K/52ZY125**  $\Phi 52$  行星减速器, 允许转矩范围: 2 N.m~20N.m  
 52mm OD Reinforced Gearbox, Permissible Load Range: 2N.m~20 N.m

● 外形和安装尺寸 Dimensions



● 电动机主要技术参数 Motor Technical Data

| 电机型号<br>TYPE | 额定电压<br>Rated voltage<br>VDC | 空载转速<br>No-load speed<br>r/min | 空载电流<br>No-load current<br>A | 额定转速<br>Rated speed<br>r/min | 额定转矩<br>Rated torque<br>mN.m | 输出功率<br>Output power<br>W | 额定电流<br>Rated current<br>A | 堵转力矩<br>Stall torque<br>mN.m | 堵转电流<br>Stall current<br>A |
|--------------|------------------------------|--------------------------------|------------------------------|------------------------------|------------------------------|---------------------------|----------------------------|------------------------------|----------------------------|
| 52ZY125-2420 | 24                           | 2000                           | 0.4                          | 1600                         | 160                          | 30                        | 2.0                        | 620                          | 6.5                        |
| 52ZY125-2430 | 24                           | 3000                           | 0.6                          | 2400                         | 190                          | 50                        | 3.5                        | 700                          | 11.5                       |
| 52ZY125-2440 | 24                           | 4000                           | 0.8                          | 3200                         | 220                          | 80                        | 4.5                        | 838                          | 16.4                       |

● 齿轮减速电机主要技术参数 Gear Motor Technical Data

配置52ZY125-2420直流电机 (52ZY125-2420 DC Motor)

| 减速比<br>Reduction ratio                                | 4.5  | 6.25 | 8   | 20  | 28  | 34  | 50  | 64  | 91   | 127  | 162 |
|-------------------------------------------------------|------|------|-----|-----|-----|-----|-----|-----|------|------|-----|
| 减速级数<br>Number of gear trains                         | 1    | 1    | 1   | 2   | 2   | 2   | 2   | 2   | 3    | 3    | 3   |
| 减速器长度(L)<br>Length(L) mm                              | 49   | 49   | 49  | 65  | 65  | 65  | 65  | 65  | 80   | 80   | 80  |
| 空载转速<br>No-load speed r/min                           | 666  | 480  | 375 | 150 | 106 | 88  | 60  | 46  | 33   | 24   | 18  |
| 额定转速<br>Rated speed r/min                             | 600  | 384  | 300 | 120 | 85  | 70  | 48  | 37  | 25   | 18   | 13  |
| 额定转矩<br>Rated torque N.m                              | 0.76 | 1.0  | 1.3 | 3.0 | 4.3 | 5.2 | 7.6 | 9.8 | 12.6 | 17.6 | 20  |
| 最大瞬间允许负载<br>Max. permissible load in a short time N.m | 6    | 6    | 6   | 25  | 25  | 25  | 25  | 25  | 50   | 50   | 50  |

配置52ZY125-2430直流电机 (52ZY125-2430 DC Motor)

| 减速比<br>Reduction ratio                                | 4.5 | 6.25 | 8   | 20  | 28  | 34  | 50  | 64   | 91   | 127 |
|-------------------------------------------------------|-----|------|-----|-----|-----|-----|-----|------|------|-----|
| 减速级数<br>Number of gear trains                         | 1   | 1    | 1   | 2   | 2   | 2   | 2   | 2    | 3    | 3   |
| 减速器长度(L)<br>Length(L) mm                              | 49  | 49   | 49  | 65  | 65  | 65  | 65  | 65   | 80   | 80  |
| 空载转速<br>No-load speed r/min                           | 888 | 640  | 500 | 200 | 142 | 117 | 80  | 62   | 44   | 31  |
| 额定转速<br>Rated speed r/min                             | 711 | 512  | 400 | 160 | 114 | 94  | 64  | 50   | 35   | 25  |
| 额定转矩<br>Rated torque N.m                              | 0.9 | 1.2  | 1.5 | 3.5 | 4.9 | 6.0 | 8.9 | 11.4 | 14.6 | 20  |
| 最大瞬间允许负载<br>Max. permissible load in a short time N.m | 6   | 6    | 6   | 25  | 25  | 25  | 25  | 25   | 50   | 50  |

● 电动机特性图 Motor Characteristic Figure

