

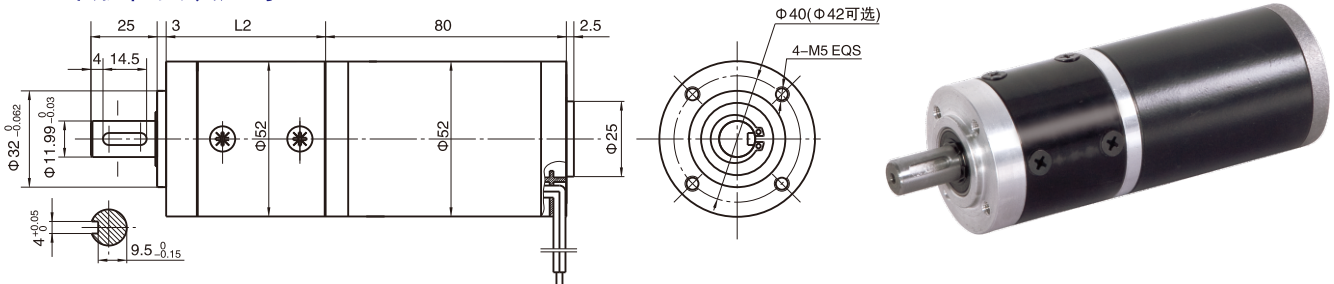
## 永磁直流行星齿轮电机 (内齿圈材质: 金属)

### PM DC Planetary Gear Motor (Ring Gear Material: Metal)

# 52JXM200K/52ZY80

Φ52 行星减速器, 允许转矩范围: 2 N.m~20N.m  
52mm OD Reinforced Gearbox,  
Permissible Load Range: 2 N.m~20N.m

## ● 外形和安装尺寸 Dimensions



## ● 电动机主要技术参数 Motor Technical Data

电机型号 TYPE	额定电压 Rated voltage VDC	空载转速 No-load speed r/min	空载电流 No-load current A	额定转速 Rated speed r/min	额定转矩 Rated torque mN.m	输出功率 Output power W	额定电流 Rated current A	堵转力矩 Stall torque mN.m	堵转电流 Stall current A
52ZY80-2430	24	3000	0.35	2400	75	18	1.5	320	6.0
52ZY80-2440	24	4000	0.42	3200	80	27	2.0	355	7.5

## ● 齿轮减速电机主要技术参数 Gear Motor Technical Data

### 配置52ZY80-2430直流电机 (52ZY80-2430 DC Motor)

减速比 Reduction ratio	4.5	6.25	8	20	28	34	50	64	91	127	162	225	312
减速级数 Number of gear trains	1	1	1	2	2	2	2	2	3	3	3	3	3
减速器长度(L) Length(L) mm	49	49	49	65	65	65	65	65	80	80	80	80	80
空载转速 No-load speed r/min	666	480	375	150	106	88	60	46	33	24	18	13	9
额定转速 Rated speed r/min	600	384	300	120	85	70	48	37	25	18	13	10	7.5
额定转矩 Rated torque N.m	0.30	0.42	0.54	1.2	1.7	2.0	3.0	3.9	5.0	6.9	8.8	12.3	17
最大瞬间允许负载 Max. permissible load in a short time N.m	6	6	6	25	25	25	25	25	50	50	50	50	50

### 配置52ZY80-2440直流电机 (52ZY80-2440 DC Motor)

减速比 Reduction ratio	4.5	6.25	8	20	28	34	50	64	91	127	162	225	312
减速级数 Number of gear trains	1	1	1	2	2	2	2	2	3	3	3	3	3
减速器长度(L) Length(L) mm	49	49	49	65	65	65	65	65	80	80	80	80	80
空载转速 No-load speed r/min	888	640	500	200	143	118	80	62	44	31	25	18	13
额定转速 Rated speed r/min	711	512	400	160	114	94	64	50	35	25	20	14	10
额定转矩 Rated torque N.m	0.32	0.45	0.58	1.3	1.8	2.2	3.2	4.1	5.3	7.4	9.5	13.1	18.2
最大瞬间允许负载 Max. permissible load in a short time N.m	6	6	6	25	25	25	25	25	50	50	50	50	50

## ● 电动机特性图 Motor Characteristic Figure

