

永磁直流齿轮减速电机 PM DC Spur Gear Motor

60JB50K/52ZY95

允许转矩范围: 5N.m

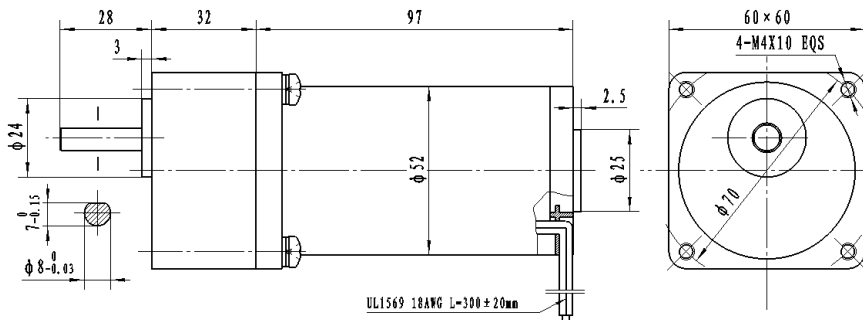
Permissible Load Range: 5N.m

● 产品特点和用途 Description of the product

□60mm的一体式齿轮减速器, 允许负载 5.0N.m。合金结构钢齿轮, 全部滚动轴承的配置。

□60mm integrated gearbox, with rated torque up to 5.0 N.m, alloy constructional steel gears, all equipped with ball bearings.

● 外形和安装尺寸 Dimensions



注: 可带霍尔编码器

● 电动机主要技术参数 Motor Technical Data

电机型号 TYPE	额定电压 Rated voltage VDC	空载转速 No-load speed r/min	空载电流 No-load current A	额定转速 Rated speed r/min	额定转矩 Rated torque N.m	输出功率 Output power W	额定电流 Rated current A	堵转转矩 Stall torque N.m	堵转电流 Stall current A
52ZY95-2420	24	2000	0.3	1500	0.06	10	1.0	0.25	3.2
52ZY95-2430	24	3000	0.4	2400	0.08	15	1.5	0.30	4.5
52ZY95-2435	24	3500	0.5	2900	0.09	25	2	0.38	5.2
52ZY95-2440	24	4000	0.5	3400	0.11	30	2.3	0.42	6.8

● 齿轮减速电机主要技术参数 Gear motor Technical Data

配置 52ZY95-2420 直流电机 (52ZY95-2420 DC Motor)

减速比 Reduction ratio	3	5	7.5	10	12.5	15	25	30	50	75	90	100	120
减速级数 Number of gear trains	2	2	2	2	2	2	3	3	3	4	4	4	4
减速器长度(L) Length(L) mm	32	32	32	32	32	32	40	40	40	40	40	40	40
空载转速 No-load speed r/min	667	400	267	200	160	133	80	67	40	27	22	20	16
额定转速 Rated speed r/min	500	300	200	150	120	100	60	50	30	20	16	15	12.5
额定转矩 Rated torque N.m	0.15	0.24	0.36	0.48	0.61	0.73	1.1	1.3	2.2	3.0	3.6	4.0	4.8
最大瞬间允许负载 Max. permissible load in a short time N.m	2.5	2.5	2.5	2.5	2.5	2.5	5.0	5.0	5.0	10	10	10	10
转 向 Direction of rotation	CW	CW	CW	CW	CW	CW	CCW	CCW	CCW	CW	CW	CW	CW

配置 52ZY95-2435 直流电机 (52ZY95-2435 DC Motor)

减速比 Reduction ratio	3	5	7.5	10	12.5	15	25	30	50	75	90
减速级数 Number of gear trains	2	2	2	2	2	2	3	3	3	4	4
减速器长度(L) Length(L) mm	32	32	32	32	32	32	40	40	40	40	40
空载转速 No-load speed r/min	1167	700	467	350	280	233	140	117	70	47	39
额定转速 Rated speed r/min	967	580	387	290	232	193	116	97	58	39	32
额定转矩 Rated torque N.m	0.22	0.36	0.55	0.73	0.91	1.1	1.6	2.0	3.3	4.5	5.0
最大瞬间允许负载 Max. permissible load in a short time N.m	2.5	2.5	2.5	2.5	2.5	2.5	5.0	5.0	5.0	10	10
转 向 Direction of rotation	CW	CW	CW	CW	CW	CW	CCW	CCW	CCW	CW	CW