

永磁直行星齿轮电机 PM DC PLANETARY GEAR MOTOR

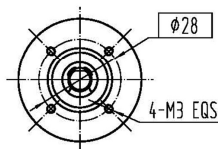
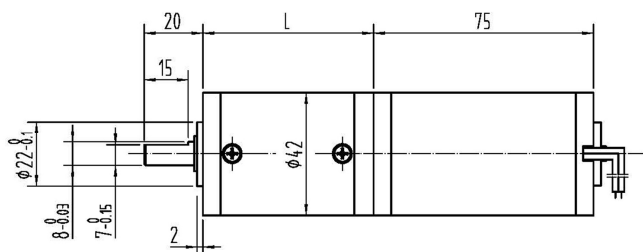
42JX50K/42ZY75

Φ42 加强型减速器, 允许转矩范围: 0.5N.m~5N.m

42mm OD Standard Gearbox,

Permissible Load Range: 0.5N.m~5N.m

● 外形和安装尺寸 Dimensions



● 电动机主要技术参数 Motor Technical Data

电机型号 TYPE	额定电压 Rated voltage VDC	空载转速 No-load speed r/min	空载电流 No-load current A	额定转速 Rated speed r/min	额定转矩 Rated torque m.Nm	输出功率 Output power W	额定电流 Rated current A	堵转力矩 Stall torque m.Nm	堵转电流 Stall current A
42ZY75-2420	24	2000	0.10	1600	35	5.9	0.42	183	1.73
42ZY75-2430	24	3000	0.15	2500	44	11.5	0.75	259	3.55
42ZY75-2440	24	4000	0.20	3400	50	17.8	1.10	336	6.09

● 齿轮减速电机主要技术参数 Gear motor Technical Data

配置 42ZY75-2420 直流电机 (42ZY75-2420 DC Motor)

减速比 Reduction ratio	3.82	4.88	15	19	24	56	71	91	116	212	271
减速级数 Number of gear trains	1	1	2	2	2	3	3	3	3	4	4
减速器长度(L) Length(L) mm	37.5	37.5	48.1	48.1	48.1	58.5	58.5	58.5	58.5	68.9	68.9
空载转速 No-load speed r/min	524	410	133	105	83	36	28	22	17	9.4	7.4
额定转速 Rated speed r/min	419	328	107	84	67	29	23	18	14	7.5	5.9
额定转矩 Rated torque N.m	0.12	0.15	0.43	0.54	0.68	1.4	1.8	2.3	3.0	4.8	5
最大瞬间允许负载 Max. permissible load in a short time N.m	1.5	1.5	6	6	6	15	15	15	15	15	15

配置 42ZY75-2430 直流电机 (42ZY75-2430 DC Motor)

减速比 Reduction ratio	3.82	4.88	15	19	24	56	71	91	116	212
减速级数 Number of gear trains	1	1	2	2	2	3	3	3	3	4
减速器长度(L) Length(L) mm	37.5	37.5	48.1	48.1	48.1	58.5	58.5	58.5	58.5	68.9
空载转速 No-load speed r/min	785	615	200	158	125	54	42	33	26	14
额定转速 Rated speed r/min	654	512	167	132	104	45	35	27	22	12
额定转矩 Rated torque N.m	0.15	0.19	0.53	0.68	0.86	1.8	2.3	2.9	3.7	5
最大瞬间允许负载 Max. permissible load in a short time N.m	1.5	1.5	6	6	6	15	15	15	15	15

配置 42ZY75-2440 直流电机 (42ZY75-2440 DC Motor)

减速比 Reduction ratio	3.82	4.88	15	19	24	56	71	91	116	212
减速级数 Number of gear trains	1	1	2	2	2	3	3	3	3	4
减速器长度(L) Length(L) mm	37.5	37.5	48.1	48.1	48.1	58.5	58.5	58.5	58.5	68.9
空载转速 No-load speed r/min	1047	820	267	211	167	71	56	44	34	19
额定转速 Rated speed r/min	890	697	227	179	142	61	48	37	29	16
额定转矩 Rated torque N.m	0.17	0.22	0.61	0.77	0.97	2.0	2.6	3.3	4.2	5
最大瞬间允许负载 Max. permissible load in a short time N.m	1.5	1.5	6	6	6	12	12	12	12	15