

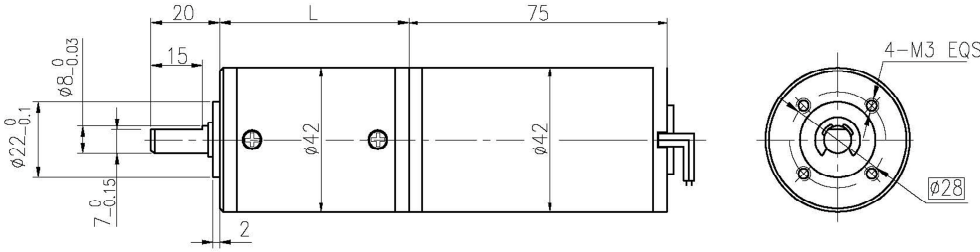
永磁直行星齿轮电机 (内齿圈材质: 金属)

PM DC Planetary Gear Motor (Ring Gear Material: Metal)

**42JX50K/42ZY75**

Φ42 行星减速器, 允许转矩范围: 0.5N.m~5N.m  
42mm Planetary Gearhead  
Permissible Load Range: 0.5N.m~5N.m

● 外形和安装尺寸 Dimensions



● 电动机主要技术参数 Motor Technical Data

电机型号 TYPE	额定电压 Rated voltage VDC	空载转速 No-load speed r/min	空载电流 No-load current A	额定转速 Rated speed r/min	额定转矩 Rated torque mN.m	输出功率 Output power W	额定电流 Rated current A	堵转力矩 Stall torque mN.m	堵转电流 Stall current A
42ZY75-2430	24	3000	0.15	2500	44	11.5	0.75	259	3.55
42ZY75-2440	24	4000	0.20	3500	55	20	1.2	360	6.3

● 齿轮减速电机主要技术参数 Gear Motor Technical Data

配置 42ZY75-2430 直流电机 (42ZY75-2430 DC Motor)

减速比 Reduction ratio	3.82	4.88	15	19	24	56	71	91	116	212
减速级数 Number of gear trains	1	1	2	2	2	3	3	3	3	4
减速器长度(L) Length(L) mm	37.5	37.5	48.1	48.1	48.1	58.5	58.5	58.5	58.5	68.9
空载转速 No-load speed r/min	785	615	200	158	125	54	42	33	26	14
额定转速 Rated speed r/min	654	512	167	132	104	45	35	27	22	12
额定转矩 Rated torque N.m	0.15	0.19	0.53	0.68	0.86	1.8	2.3	2.9	3.7	5
最大瞬间允许负载 Max. permissible load in a short time N.m	1.5	1.5	6	6	6	15	15	15	15	15

配置 42ZY75-2440 直流电机 (42ZY75-2440 DC Motor)

减速比 Reduction ratio	3.82	4.88	15	19	24	56	71	91	116	212
减速级数 Number of gear trains	1	1	2	2	2	3	3	3	3	4
减速器长度(L) Length(L) mm	37.5	37.5	48.1	48.1	48.1	58.5	58.5	58.5	58.5	68.9
空载转速 No-load speed r/min	1047	820	267	211	167	71	56	44	34	19
额定转速 Rated speed r/min	916	717	233	184	146	63	49	37	30	17
额定转矩 Rated torque N.m	0.19	0.24	0.67	0.85	1.1	2.2	2.9	3.7	4.7	5
最大瞬间允许负载 Max. permissible load in a short time N.m	1.5	1.5	6	6	6	12	12	12	12	15

● 电动机特性图 Motor Characteristic Figure

