

# 永磁直行星齿轮电机 (内齿圈材质: 金属和粉末金属)

## PM DC Planetary Gear Motor (Ring Gear Material: Metal and Powder metal)

### 36JXE30K/36ZY57

Φ36 行星减速器, 允许转矩范围: 0.3N.m~3.0N.m

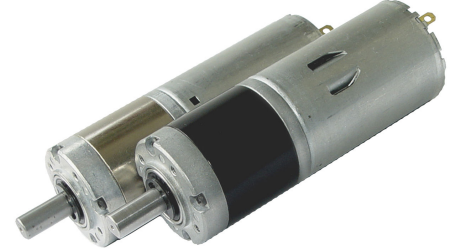
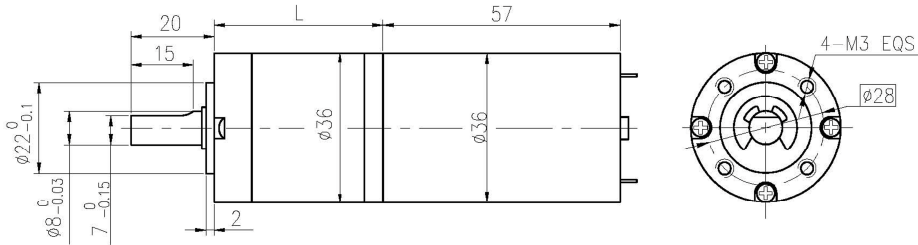
36mm Planetary Gearhead

Permissible Load Range: 0.3N.m~3.0N.m

可在两种材料的内齿圈中进行选择: 粉末金属 (型号 36JXF30K), 金属 (型号 36JXE30K)

Ring gear can be selected within the two materials: Powder metal (Type:36JXF30K), Metal (Type:36JXE30K)

### ● 外形和安装尺寸 Dimensions



### ● 电动机主要技术参数 Motor Technical Data

电机型号 TYPE	额定电压 Rated voltage VDC	空载转速 No-load speed r/min	空载电流 No-load current mA	额定转速 Rated speed r/min	额定转矩 Rated torque mN.m	输出功率 Output power W	额定电流 Rated current A	堵转转矩 Stall torque mN.m	堵转电流 Stall current A
36ZY57-2430	24	3000	100	2500	15	4.5	0.52	92	2.2
36ZY57-2442	24	4200	120	3600	19	7	0.52	97	2.8

可以制造 12VDC 的产品, 转速、转矩指标与 24VDC 基本一致。 12V DC Optional, speed and torque is the same as 24V DC's.

### ● 齿轮减速电机主要技术参数 Gear Motor Technical Data

配置 36ZY57-2430 直流电机 (36ZY57-2430 DC Motor)

减速比 Reduction ratio	3.7	5.2	14	19	27	51	71	100	139	181	219	254	306	354	427
减速级数 Number of gear trains	1	1	2	2	2	3	3	3	3	4	4	4	4	4	4
减速器长度(L) Length(L) mm	26.5	26.5	33.6	33.6	33.6	40.5	40.5	40.5	40.5	47.4	47.4	47.4	47.4	47.4	47.4
空载转速 No-load speed r/min	809	579	214	158	111	59	42	30	22	16	14	12	9.8	8.5	7.0
额定转速 Rated speed r/min	674	483	179	132	93	49	35	25	18	13	11	9.8	8.2	7.1	5.9
额定转矩 Rated torque N.m	0.050	0.070	0.17	0.23	0.33	0.56	0.78	1.1	1.5	1.8	2.1	2.4	3	3	3
最大瞬间允许负载 Max. permissible load in a short time N.m	1.0	1.0	3.5	3.5	3.5	7.5	7.5	7.5	7.5	9	9	9	9	9	9

配置 36ZY57-2442 直流电机 (36ZY57-2442 DC Motor)

减速比 Reduction ratio	3.7	5.2	14	19	27	51	71	100	139	181	219	254	306	354
减速级数 Number of gear trains	1	1	2	2	2	3	3	3	3	4	4	4	4	4
减速器长度(L) Length(L) mm	26.5	26.5	33.6	33.6	33.6	40.5	40.5	40.5	40.5	47.4	47.4	47.4	47.4	47.4
空载转速 No-load speed r/min	1132	811	300	221	156	82	59	42	30	22	19	17	14	12
额定转速 Rated speed r/min	970	695	257	189	133	71	51	36	26	19	16	14	12	10
额定转矩 Rated torque N.m	0.063	0.089	0.22	0.29	0.42	0.71	0.98	1.4	1.9	2.3	2.7	3	3	3
最大瞬间允许负载 Max. permissible load in a short time N.m	1.0	1.0	3.5	3.5	3.5	7.5	7.5	7.5	7.5	9	9	9	9	9

### ● 电动机特性图 Motor Characteristic Figure

