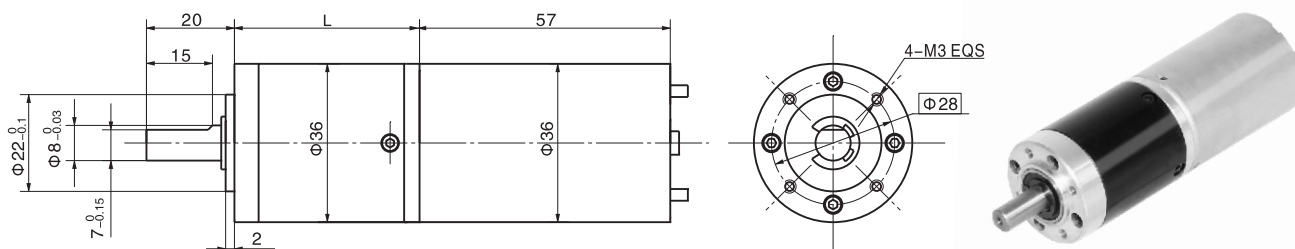


永磁直流行星齿轮电机 PM DC Planetary Gear Motor

36JX30K/36ZY57

Φ36加强型减速器，允许转矩范围：0.3N.m~3.0N.m
36mm OD Reinforced Gearbox,
Permissible Load Range: 0.3N.m~3.0N.m

● 外形和安装尺寸 Dimensions



● 电动机主要技术参数 Motor Technical Data

电机型号 Type	额定电压 Rated voltage VDC	空载转速 No-load speed r/min	空载电流 No-load current mA	额定转速 Rated speed r/min	额定转矩 Rated torque mN.m	输出功率 Output power W	额定电流 Rated current A	堵转力矩 Stall torque mN.m	堵转电流 Stall current A
36ZY57-2430	24	3000	100	2500	15	4.5	0.52	92	2.2
36ZY57-2436	24	3600	120	3000	17	5	0.5	89	2.0
36ZY57-2442	24	4200	120	3600	19	7	0.52	97	2.8

可以制造12VDC的产品，转速、转矩指标与24VDC基本一致。12V DC Optional, Speed and Torque is The Same as 24V DC's.

● 齿轮减速电机主要技术参数 Gear Motor Technical Data

配置36ZY57-2430直流电机 (36ZY57-2430 DC Motor)

减速比 Reduction ratio	3.7	5.2	14	19	27	51	71	100	139	189	264	369
减速级数 Number of gear trains	1	1	2	2	2	3	3	3	3	4	4	4
减速器长度(L) Length(L) mm	31.0	31.0	38.5	38.5	38.5	48.4	48.4	48.4	48.4	55.8	55.8	55.8
空载转速 No-load speed r/min	809	579	214	158	111	59	42	30	22	16	11	8.1
额定转速 Rated speed r/min	674	483	179	132	93	49	35	25	18	13	9.5	6.8
额定转矩 Rated torque N.m	0.050	0.070	0.17	0.23	0.33	0.56	0.78	1.1	1.5	1.8	2.6	3
最大瞬间允许负载 Max. permissible load in a short time N.m	1.0	1.0	3.5	3.5	3.5	7.5	7.5	7.5	7.5	9	9	9

配置36ZY57-2436直流电机 (36ZY57-2436 DC Motor)

减速比 Reduction ratio	3.7	5.2	14	19	27	51	71	100	139	189	264	369
减速级数 Number of gear trains	1	1	2	2	2	3	3	3	3	4	4	4
减速器长度(L) Length(L) mm	31.0	31.0	38.5	38.5	38.5	48.4	48.4	48.4	48.4	55.8	55.8	55.8
空载转速 No-load speed r/min	970	695	257	189	133	71	51	36	26	19	14	10
额定转速 Rated speed r/min	809	579	214	158	111	59	42	30	22	16	11	8.1
额定转矩 Rated torque N.m	0.057	0.079	0.19	0.26	0.37	0.63	0.88	1.2	1.7	2.1	2.9	3
最大瞬间允许负载 Max. permissible load in a short time N.m	1.0	1.0	3.5	3.5	3.5	7.5	7.5	7.5	7.5	9	9	9

配置36ZY57-2442直流电机 (36ZY57-2442 DC Motor)

减速比 Reduction ratio	3.7	5.2	14	19	27	51	71	100	139	189	264	369
减速级数 Number of gear trains	1	1	2	2	2	3	3	3	3	4	4	4
减速器长度(L) Length(L) mm	31.0	31.0	38.5	38.5	38.5	48.4	48.4	48.4	48.4	55.8	55.8	55.8
空载转速 No-load speed r/min	1132	811	300	221	156	82	59	42	30	22	16	11
额定转速 Rated speed r/min	970	695	257	189	133	71	51	36	26	19	14	9.8
额定转矩 Rated torque N.m	0.063	0.089	0.22	0.29	0.42	0.71	0.98	1.4	1.9	2.3	3	3
最大瞬间允许负载 Max. permissible load in a short time N.m	1.0	1.0	3.5	3.5	3.5	7.5	7.5	7.5	7.5	9	9	9