

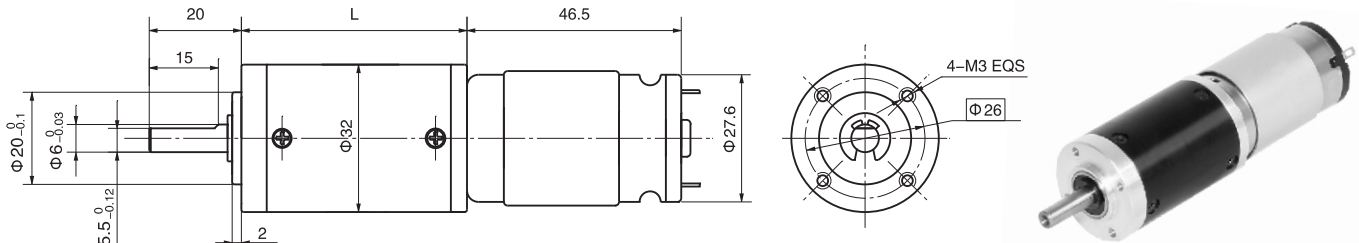
永磁直流行星齿轮电机 PM DC Planetary Gear Motor

32JX30K/28ZY47P

Φ32加强型减速器, 允许转矩范围: 0.3N.m~3.0N.m
32mm OD Reinforced Gearbox,
Permissible Load Range: 0.3N.m~3.0N.m

常规产品出轴直径Φ6, 也可以配置直径Φ8的出轴。Standard Output Shaft OD 6mm, OD 8mm Optional.

● 外形和安装尺寸 Dimensions



● 电动机主要技术参数 Motor Technical Data

电机型号 Type	额定电压 Rated voltage VDC	空载转速 No-load speed r/min	空载电流 No-load current mA	额定转速 Rated speed r/min	额定转矩 Rated torque mN.m	输出功率 Output power W	额定电流 Rated current mA	堵转力矩 Stall torque mN.m	堵转电流 Stall current A
28ZY47P-2445	24	4500	80	3000	9	2.8	270	25	0.7
28ZY47P-2460	24	6000	100	4500	17	8.0	470	65	1.8
28ZY47P-2490	24	9000	160	6400	14	9.4	750	47	2.2

电机型号中增加代号P, 表示配置了屏蔽罩, 直径为Φ28.9。P - Shielding Case, OD 28.9mm

● 齿轮减速电机主要技术参数 Gear Motor Technical Data

配置28ZY47P-2445直流电机 (28ZY47P-2445 DC Motor)

减速比 Reduction ratio	3.7	5.2	14	19	27	51	71	100	139	189	264	369	516	720
减速级数 Number of gear trains	1	1	2	2	2	3	3	3	3	4	4	4	4	4
减速器长度(L) Length(L) mm	31.0	31.0	40.1	40.1	40.1	49.0	49.0	49.0	49.0	57.9	57.9	57.9	57.9	57.9
空载转速 No-load speed r/min	1213	869	321	237	167	88	63	45	32	24	17	12	9	6
额定转速 Rated speed r/min	809	579	214	158	111	59	42	30	22	16	11	8	6	4
额定转矩 Rated torque N.m	0.03	0.04	0.10	0.14	0.20	0.33	0.46	0.65	0.90	1.1	1.5	2.2	3	3
最大瞬间允许负载 Max. permissible load in a short time N.m	1.0	1.0	3.5	3.5	3.5	7.5	7.5	7.5	7.5	9	9	9	9	9

配置28ZY47P-2460直流电机 (28ZY47P-2460 DC Motor)

减速比 Reduction ratio	3.7	5.2	14	19	27	51	71	100	139	189	264	369	516
减速级数 Number of gear trains	1	1	2	2	2	3	3	3	3	4	4	4	4
减速器长度(L) Length(L) mm	31.0	31.0	40.1	40.1	40.1	49.0	49.0	49.0	49.0	57.9	57.9	57.9	57.9
空载转速 No-load speed r/min	1617	1158	429	316	222	118	85	60	43	32	23	16	12
额定转速 Rated speed r/min	1213	869	321	237	167	88	63	45	32	26	19	13	10
额定转矩 Rated torque N.m	0.06	0.08	0.19	0.26	0.37	0.62	0.87	1.2	1.7	2.1	2.9	3	3
最大瞬间允许负载 Max. permissible load in a short time N.m	1.0	1.0	3.5	3.5	3.5	7.5	7.5	7.5	7.5	9	9	9	9

配置28ZY47P-2490直流电机 (28ZY47P-2490 DC Motor)

减速比 Reduction ratio	3.7	5.2	14	19	27	51	71	100	139	189	264	369	516
减速级数 Number of gear trains	1	1	2	2	2	3	3	3	3	4	4	4	4
减速器长度(L) Length(L) mm	31.0	31.0	40.1	40.1	40.1	49.0	49.0	49.0	49.0	57.9	57.9	57.9	57.9
空载转速 No-load speed r/min	2426	1737	643	474	333	176	127	90	65	48	34	24	17
额定转速 Rated speed r/min	1725	1236	457	337	237	125	90	64	46	34	26	19	14
额定转矩 Rated torque N.m	0.05	0.07	0.16	0.22	0.31	0.51	0.72	1.0	1.4	1.7	2.4	3	3
最大瞬间允许负载 Max. permissible load in a short time N.m	1.0	1.0	3.5	3.5	3.5	7.5	7.5	7.5	7.5	9	9	9	9